

072304T4FSH

FASHION DESIGN LEVEL 4

FAS/OS/FD/CR/02/4

Construct Garments

November/ December 2025

Printed By: Technical And Vocational College
Date: 19.11.2025
10:55 AM



Printed By: Technical And Vocational College
Date: 19.11.2025
10:55 AM

TVET CURRICULUM DEVELOPMENT, ASSESSMENT AND CERTIFICATION COUNCIL (TVET CDACC)

WRITTEN ASSESSMENT

Printed By Technical And Vocational College
Date: 19.11.2025 10:55 AM

Time: 2 HOURS

INSTRUCTIONS TO CANDIDATE

Printed By Technical And Vocational College

1. This paper consists of **TWO** sections **A** and **B**.

Date: 19.11.2025 10:55 AM

2. Attempt **ALL** the questions in each section.

3. Mark questions are indicated in the brackets

Printed By: Technical And Vocational College
Date: 19.11.2025 10:55 AM

4. You are provided with a separate answer booklet for the questions

Printed By: Technical And Vocational College

5. Do NOT write on the question paper.

Date: 19.11.2025 10:55 AM

Printed By: Technical And Vocational College
Date: 19.11.2025
10:55 AM

This paper consists of FOUR (4) printed pages**Candidates should check the question paper to ascertain that all pages are printed as**

Printed By: Technical And Vocational College

Date: 19.11.2025 10:55 AM

indicated and that no questions are missing.

Printed By:

SECTION A (10 MARKS)***Attempt all questions in this section. Each question carries one mark.***

1. _____ is used to put pieces permanently during construction

A. Back stitch

B. Tacking stitch

C. Blanket stitch

Printed By: Technical And Vocational College

D. Overlock stitch

2. Select an appropriate tool among the following, used when sketching a garment.

A. Scissors

B. Pencil

C. Tape measure

D. French curve.

3. Waist, bust hip and _____ measurements are all taken horizontally while the tape measure is parallel to the ground.

A. Ankle round

Printed By: Technical And Vocational College

B. Full length

C. Nape to waist

D. Waist to hip.

4. Choose a correct definition for a patch pocket among the following.

A. A pocket set into a garment opening, appearing as a slit on the surface.

B. A pocket created within the lining of a garment, invisible from the outside.

Printed By: Technical And Vocational College

C. A pocket joined after a slash has been made through a fabric.

D. Pocket formed by sewing a separate piece directly onto the outside of a garment.

5. Identify a method that describes how a set-in sleeve is constructed.

A. The sleeve is cut as one piece with the bodice, without a separate armhole seam.

B. The sleeve is attached into the armhole of the garment after the side seams and underarm seams have been joined.

C. The sleeve is formed by extending the shoulder line of the garment to create a

continuous cut.

D. The sleeve is stitched onto the neckline area, falling loosely over the shoulders.

Printed By: echnical And Vocational College

Date: 19.11.2025 10:55 AM

6. Mandarin collar, shirt collar and _____ are all types of standing collars.

A. Peter pan collar

B. Eton collar

C. Wing collar

D. Gents collar

7. Identify a part of a machine that pulls the fabric forward when stitching.

A. Presser foot

B. Feed dog

C. Slide plate

D. Reverse lever

8. Select the seam type formed by stitching double seams that enclose and hide raw edges.

A. Machine fell

B. Plain open seam

C. Overlaid seam

D. Overlock seam

Printed By: Technical And Vocational College

9. Select the correct function of a seam ripper during garment construction.

A. Cut through fabric.

B. Cut threads when stitching.

C. Snip through fabric.

D. Undo wrongly done seams.

10. Choose the correct procedure used when joining garment pieces.

A. Tack, pin, stitch

B. Tack, pin, stitch

C. Stitch, pin, tack

D. Tack, undo tacking's, pin, stitch.

Printed By: Technical And Vocational College Date: 19.11.2025

10:55 AM

SECTION B (40 MARKS)

Attempt ALL questions in this section.

11. Sketch the following lines as used in ladies' garments.

a) Off- shoulder neckline.

(2 Marks)

b) Halter neckline.

(2 Marks)

12. Identify THREE waistbands in garment construction.

(3 Marks)

13. List THREE methods of hemming a garment during construction.

(3 Marks)

14. The grain direction of a fabric is indicated by a grain line. Name THREE types of grain-lines in garment cutting.

Date: 19.11.2025 10:55 AM

(3 Marks)

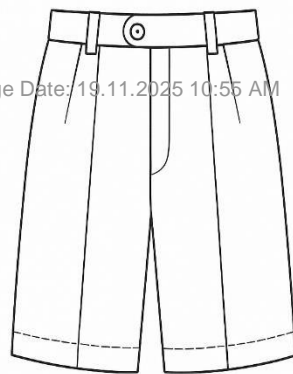
15. Trainees must observe safety while working in the workshop. State THREE reasons of wearing closed flat shoes with sturdy sole while in the workshop.

(3 Marks)

16. Identify any FOUR pattern pieces in the garment style sketched below.

(4 Marks)

Printed By: Technical And Vocational College Date: 19.11.2025 10:55 AM



FRONT

Printed By: Technical And Vocational College Date: 19.11.2025 10:55 AM



BACK

Printed Technical And Vocational College Date: 19.11.2025

10:55 AM

17. Shorts are commonly worn by men. Mention any other Fes of men's garments.

Date: 19.11.2025 10:55 AM

(4 Marks)

18. Identify any FOUR causes of accidents in a garment construction workshop.

(4 Marks)

19. Name FOUR methods used to decorate children's garments in construction.

Date: 19.11.2025 10:55 AM

(4

Marks)

20. State FOUR purposes of adding a gum interface in a collar.

(4 Marks)

21. Identify FOUR reasons for laying fabric before cutting in garment construction.

(4 Marks)

Date: 19.11.2025 10:55 AM